

**WELDFIT™**

# **/ PIPELINE INTERVENTION**

Hot Tapping & Line Stopping • In-Service Welding • Pipeline Fittings



Responsiveness • Innovation • Reliability • Safety



# Our Expertise Keeps Your Product Moving to Market.



Tie-ins, repairs, inspections—everything needs to get done and the market won't wait. We're committed to delivering products and services that won't slow you down. Using state-of-the-art equipment, innovative pipeline isolation technologies and unparalleled attention to detail, our highly trained and skilled technicians will keep your system on-line and your product moving.

## EXPERTISE

Our teams understand what your project is up against. We'll present you with a course of action positioned for success, then get the job done right and on time.

## SAFETY

We take hot tapping and line stopping services very seriously. Safety comes first in everything that we do, and our standards go beyond customer safety requirements to continuously improve all aspects of our HSE performance.

## Pipeline Services


Hot Tapping & Line Stopping / In-Service Welding



WeldFit's Target Zero focus on safety is ingrained in every member of our pipeline intervention crews. Before beginning work at the job site, our technicians are fully qualified on all applicable safety procedures and protocols. Our goal is simple: everyone returns home safely to their families at the end of each day.



# Dually™ Double Block & Bleed Line Stop System. As Simple As It Gets.

Dually™  Double Block & Bleed Line Stop System  
Safety Simplified

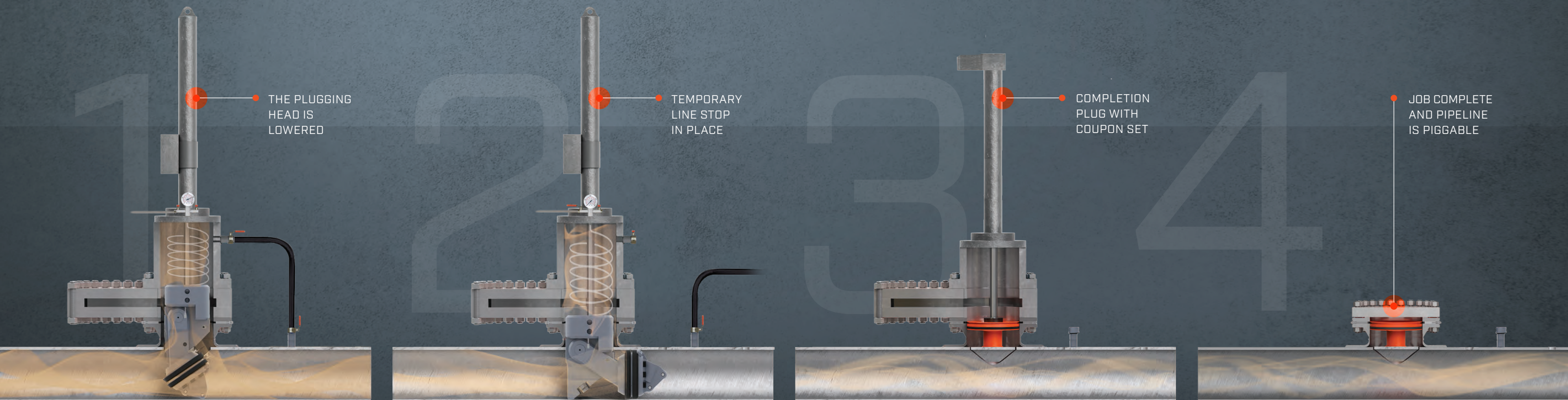
The state-of-the-art Dually™ technology is a next-generation addition to WeldFit's hot tapping and line stopping service portfolio.

With its many performance advantages, the Dually™ Double Block and Bleed Line Stop System is becoming the new industry standard for double block and bleed (DBB) pipeline isolation operations.

Dually is field proven to maximize job site safety for low- and high-pressure applications up to 1480 psig. Its patent-pending single pivoting head/dual seal design creates a safe, no-pressure Zero Zone.™ And unlike DBB equipment with two bulky, coupled heads or complicated hydraulics, the Dually doesn't create stress on the fitting and bolted connection that can lead to unwanted project delays. The Dually system meets the same stringent quality control requirements as WeldFit's traditional plugging heads.

- / SINGLE PIVOTING HEAD AND ADVANCED DUAL-SEAL DESIGN FOR CONSISTENT, RELIABLE PERFORMANCE.
- / SINGLE-TAP SIMPLICITY REDUCES LABOR AND MATERIAL COSTS AND LEAVES LESS HARDWARE ON THE LINE.
- / COMPACT DESIGN FOR CLEANER ENTRY AND EASIER REMOVAL.
- / DOUBLE BLOCK AND BLEED FUNCTIONALITY WITH THE NO-PRESSURE ZERO ZONE™ FOR ADDED ASSURANCE.
- / EASY-TO-REPLACE SEALING ELEMENTS MEANS JOBSITE FLEXIBILITY.
- / NACE-COMPLIANT MATERIALS
- / SIZES : 8- TO 42-INCH \*

\* Contact your WeldFit representative to confirm availability.





# Traditional Technology, Expert Technicians. Just Tell Us When and Where.

Services that keep you online and on time.

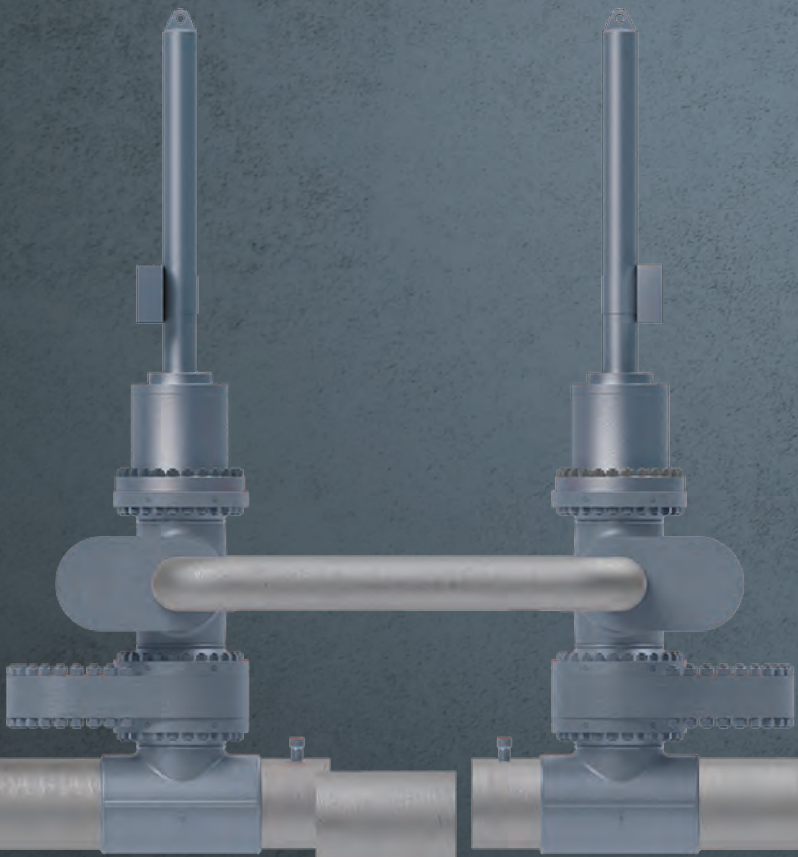
At WeldFit, your productivity is our priority. We work hard to optimize line stop operations no matter the project variables. Our expert technicians are able to walk you through the best solutions for any application, and then execute in the field. The result? Smooth project delivery with uninterrupted flow of product and profits.



## TRADITIONAL LINE STOPPING

### **BYPASS THROUGH 3-WAY TEES OR SPOOL ADAPTORS**

When reduced flow is acceptable and constricted flow is still adequate to maintain operational expectations.



# Total Reliability Under Pressure. Trust The Tapping Experts.

We get the job done with precision.

We're constantly pushing ourselves to make everything we touch as productive as possible and help our customers stay online. Our specialized teams are highly trained in the latest technologies and our skills ensure that any tie-in or other intervention goes smoothly.



## HOT TAPPING SOLUTIONS

01

**SIZES**  
1/2" THROUGH  
36" DIAMETER

02

**PRESURES**  
UP TO  
2220 PSI

03

**FITTINGS**  
FOR HOT TAP  
AND LINE STOP  
OPERATIONS

04

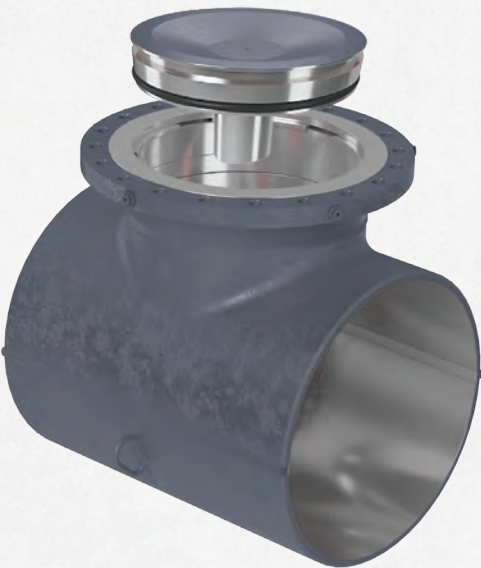
**SAFETY**  
ESTABLISHED  
PROTOCOLS AND  
EXCELLENT RECORD



# Pipeline Fittings and Reinforcing Saddles for Nearly Every Application.

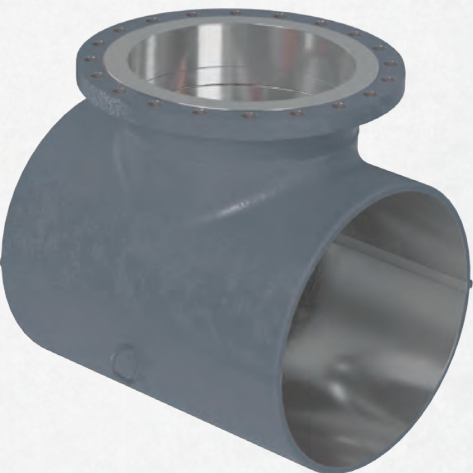
WeldFit’s Reliability Begins with Quality.

Our fittings deliver robust reliability to maintain the integrity of your pipeline system. We offer standard and custom designs for both onshore and offshore applications in a wide variety of configurations so you can be sure you get what you need every time. Plus, our fittings are manufactured in accordance with our ISO:9001:201 quality program and are designed to meet the requirements of ASME B31.3 and B31.4/8.



Line Stop Fittings

- / SURELOC® FLANGE AND PLUG SYSTEM DESIGNED FOR SAFE LINE INTERVENTION OPERATIONS.
- / O-RINGS STANDARD WITH VITON® AND BUNA ELASTOMERS
- / SCARFED NIPPLE PLUG ASSURES PIPELINE PIGGABILITY



Hot Tap Fittings

- / SIZE-ON-SIZE OR REDUCED BRANCH
- / ENGINEERED WITH INTEGRAL REINFORCEMENT
- / EXTRUSION CONFIGURATION ELIMINATES RUN-TO-BRANCH WELD FOR STRONGER PIPELINE INTEGRITY
- / MATERIAL GRADES FROM A234 WPB TO WPHY-70

Viton® is a registered trademark of DuPont Performance Elastomers.

## Inventory Stocked and Ready to Ship

It’s our mission to always provide timely support for your operation. We work hard to maintain a wide-ranging inventory of standard pipeline fittings and associated components—typically

available for same-day or next-day shipment. That means you get access to a wide variety of some of the industry’s highest quality fittings designed and built to WeldFit’s trusted standard specifications.

## Specialty Fittings and Plugs



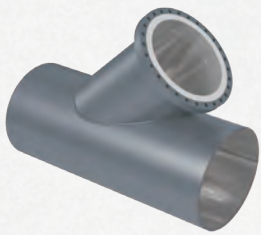
3-WAY TEES



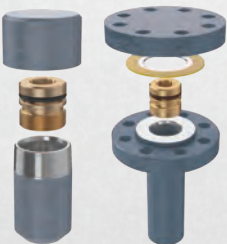
SPHERICAL 3-WAY TEES



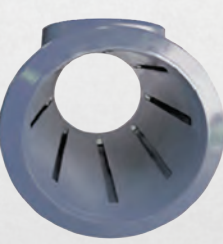
DOUBLE-HUB FITTINGS



ANGLED FITTINGS



PURGE & EQUALIZATION FITTINGS



PIGGABLE FLOW TEES

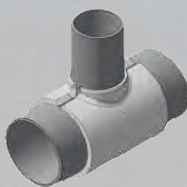


FLOW-THROUGH PLUGS



SOLID COMPLETION PLUGS WITH GUIDE BARS & SIDE OUTLETS

## Reinforcing Saddles / PARTIAL AND FULL-ENCIRCLEMENT CONFIGURATIONS



PART 1



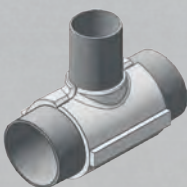
PART 2



PART 3



PART 4



PART 5



PART 6



# When It's Not Just Another Weld.

## Qualified. Reliable. Safe.

WeldFit's DQ certified live-line in-service welders average more than a decade in the industry and are qualified to ASME Section IX and API 1104 — so getting the job done right is second nature to them. And because this service is fully integrated within our hot tap and line stop business, you get one-stop coordination from fitting manufacturing to final tie-in. When it's not just another weld, choose WeldFit.

BACKED BY SIMULATION  
AND REAL-WORLD TESTING

## IN-SERVICE WELDING

# Fastest to Zero, Predictable, Proven, Adaptable Cross Compression Solutions.

Safely and easily reduce methane emissions associated with common pipeline operations. ReCAP<sup>®</sup> recompresses natural gas from pipeline sections that have been isolated for depressurization and rapidly transfers that gas, through cross compression, to an adjacent pressurized system. Gas recovery rates often reach up to 99.99% in some cases.

**ReCAP<sup>®</sup>**  
Emissions Recovery System







5650 Brittmoore Rd. | Houston, TX 77041 | 713-460-3700 | [WeldFit.com](https://WeldFit.com)

® Registered Trademark of WeldFit Corporation in the United States and other countries. ™ Trademark in the United States and other countries.

© Copyright 2024 All rights reserved by WeldFit Corporation. WF004-0724

The WeldFit logo is located in the bottom left corner. It features the word "WELDFIT" in a bold, white, sans-serif font. A red diagonal line is positioned between the "W" and the "E". A small "TM" trademark symbol is located to the right of the word.

**WELDFIT™**