

I. FITTINGS:

Sureloc™ Fitting



Sureloc™ Double Hub Fitting

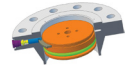


Sureloc™ Flange with Scarfed Nozzle

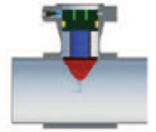


Please choose one of the following:

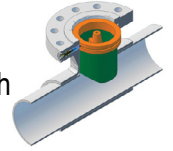
A. Solid Completion Plug



B. Scarfed Nipple Plug



C. Flow Through Plug with Guide Bar



Size of fitting:

Run: _____ Branch: _____ Flange Class: _____

Flow Through Plug I.D.: _____

| | | |
|-----------------|------------------|------------|
| Customer: _____ | Contact: _____ | |
| Location: _____ | Telephone: _____ | Fax: _____ |
| Date: _____ | Email: _____ | |

| II. EXISTING PIPE INFORMATION | |
|---|--|
| Header Pipe Size | _____ NPS DN _____ |
| Header Material (specification and grade) | _____ |
| Wall Thickness | in. _____ mm. _____ |
| Design Code | B31.3 B31.4 B31.8 Other: _____ |
| Design Factor (required for ASME B31.4/8) | 0.72 0.60 0.50 0.40 Other: _____ |
| Flange Rating | 150 300 600 Other: _____ |
| Design Pressure | _____ psi bar Other: _____ |
| Design Temperature | Max. _____ °F/ _____ °C Min. _____ °F/ _____ °C |
| Corrosion Allowance | in. _____ mm. _____ |
| Suitable for Sour Service | Yes No |

| III. FITTING DESIGN INFORMATION | |
|--|--|
| Fitting Run Material | _____ |
| Fitting Run Length | Standard Special: _____ in. _____ mm. _____ |
| Fitting Branch Size | _____ NPS DN _____ |
| Flange Schedule | _____ Special: _____ in. _____ mm. _____ |
| Fitting Branch Height (From CL of Run) | Standard Special: _____ in. _____ mm. _____ |
| Fitting Flange Face | Standard (raised face) RTJ Smooth Other: _____ |
| Backing Strips | Yes No |
| Coating | Standard (primer) Other: _____ |
| Beveled Ends | Yes No |

IV. NOTES/COMMENTS
